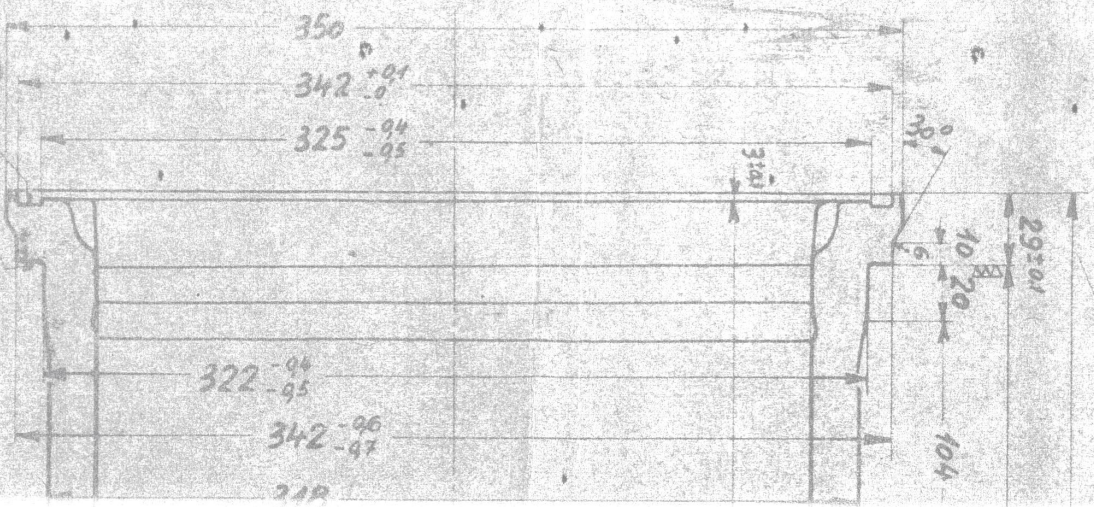
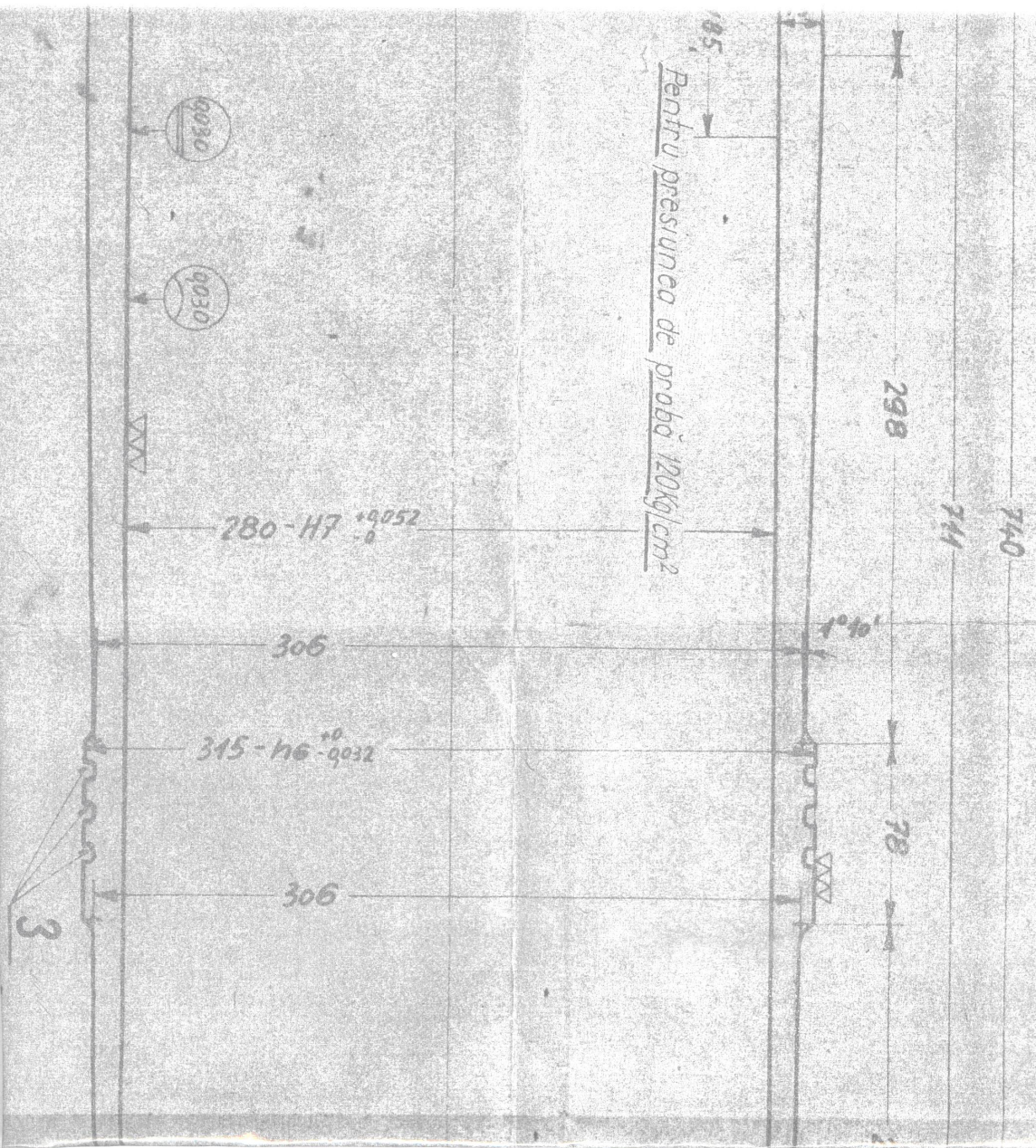
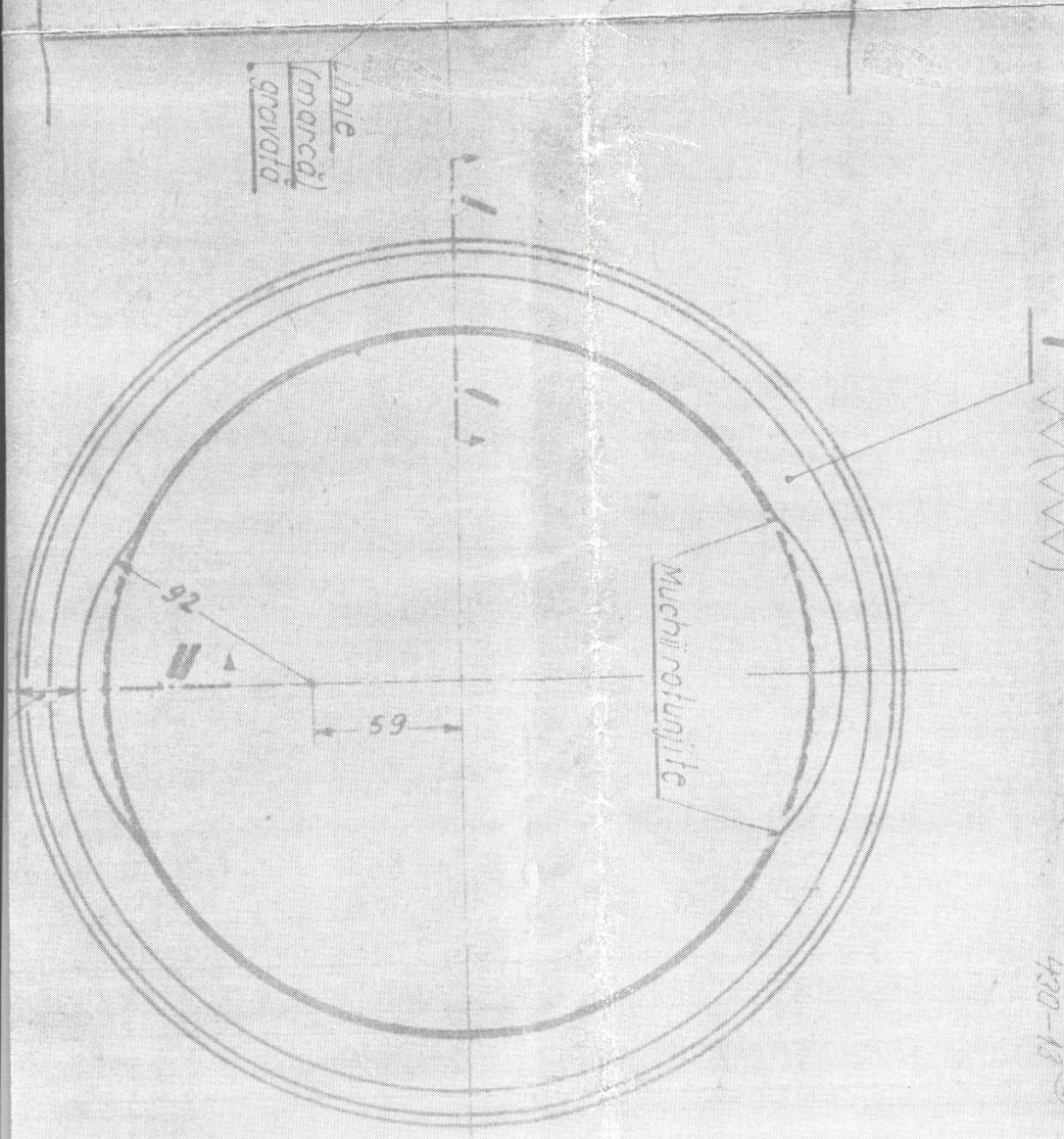
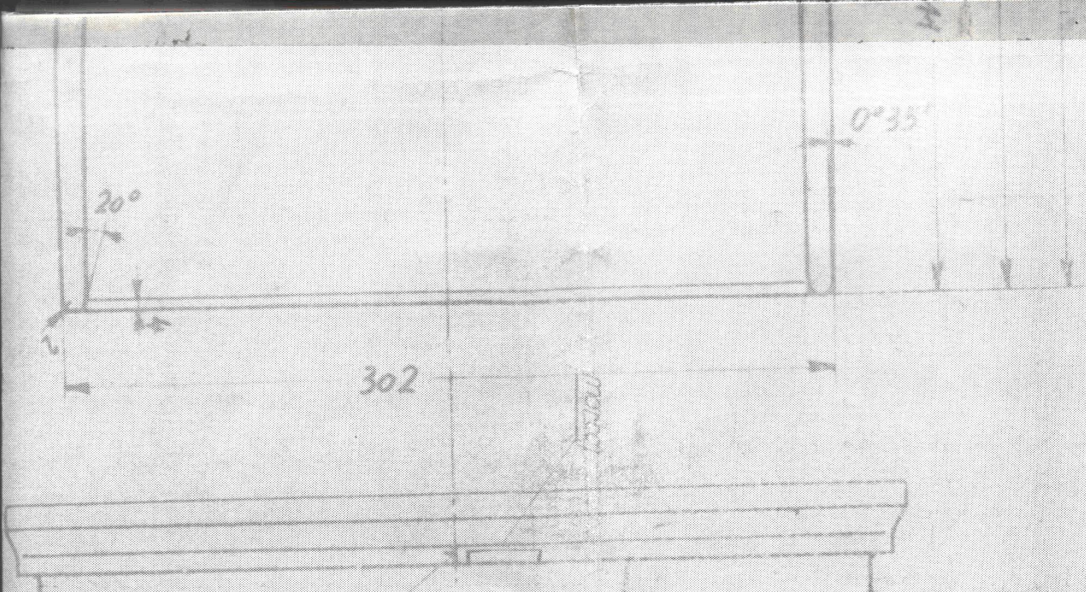


2



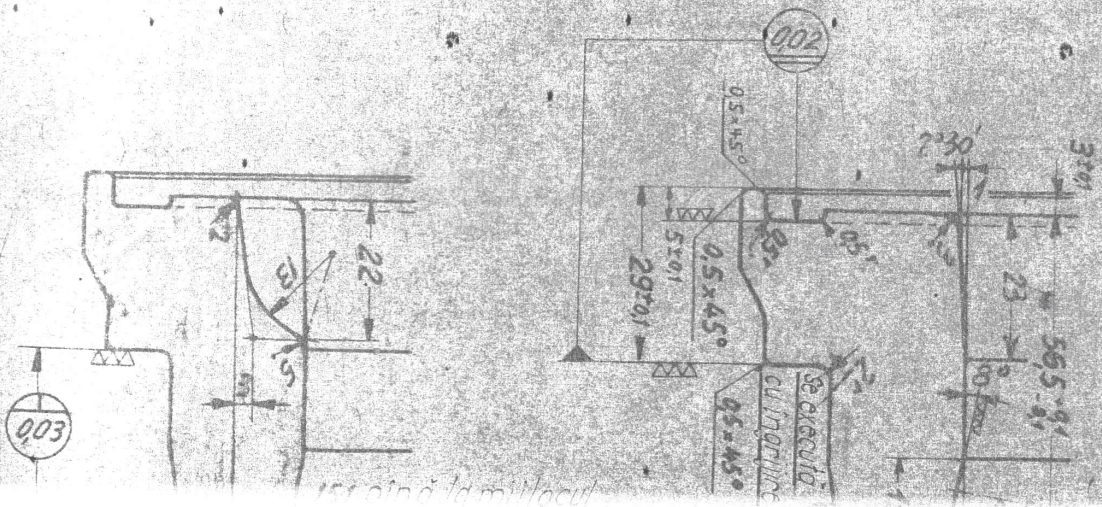
3





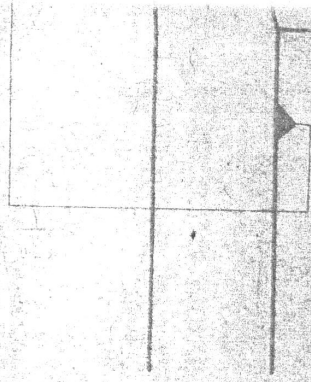
Prelucrare conform
 prescripției Nr. D701-04
 420-13

Partea distributiei

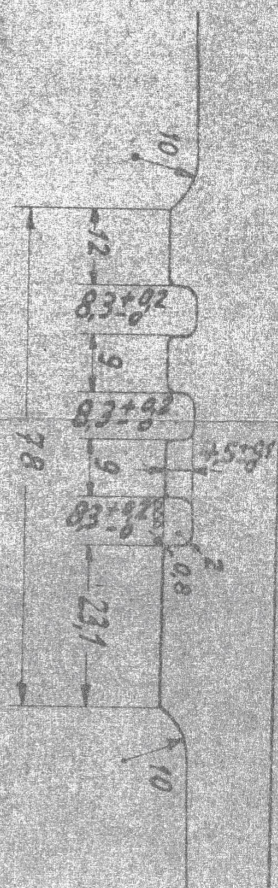


is oină la mîlăcui
cîndrului

Sectione II-II



Sectione I-I



430-13 @
 Prescripție aferentă: D.401-04
 Greutatea pe ansamblu = 77,8 kg.

Pos	Desen Nr sau STAS	Buc.	Denumirea	Material	Greutate pe buc.	Observatii
3	D 405 - 34	3	Gornitură de cauciuc	Cauciuc M169	0030	Duplicat
2	—	2	Inel de etansare	SI III 23	0060	HB-100-120(gama)
1	—	1	Cămașa cilindricului	Fonta specială	77,8	
Modus: Ste		Copial: Xumpul	Verif: 224.964 Ste	Aordb: 625.964 Xumpul		
Scara: 1:2,5	Modific: a) 2x 10.85.02.67 b) 3x 661.1.20		c) d)	Inlocuiește N. 104-10/11.59		
6-12 LDA 28		CĂMAȘA CILINDRULUI				
526-73		Subansamblu				
Des: 2-1	D.201-98	M.I.G.				
H. P. 100		7720020				