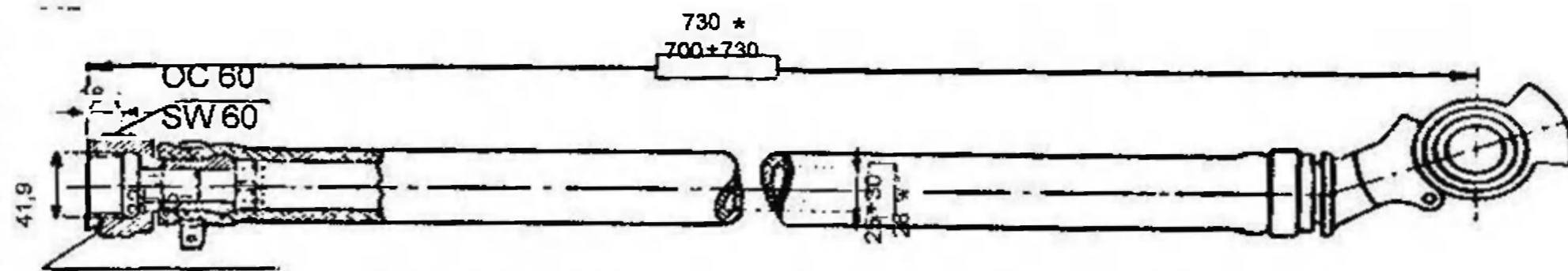




Appendices

Appendix D - Coupling for automatic air brakes

Obligatory for new supplies



Whitworth threading with truncated threads for 1 1/4" (11 threads per English inch)

Fig. 25 -

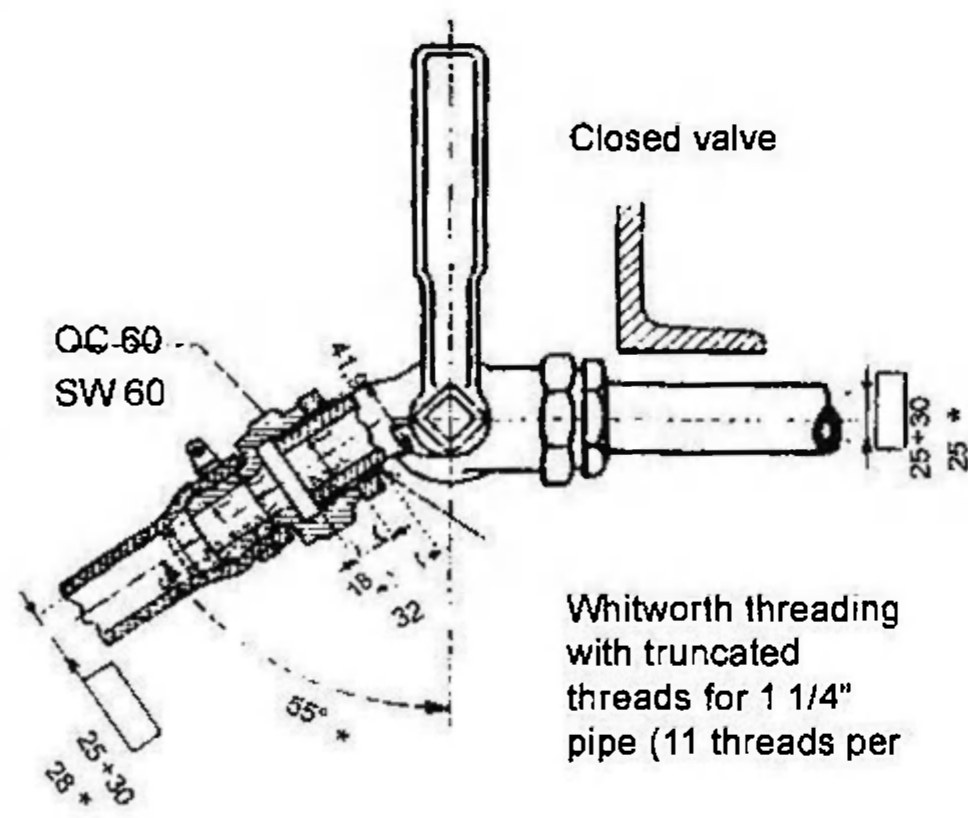


Fig. 26 -

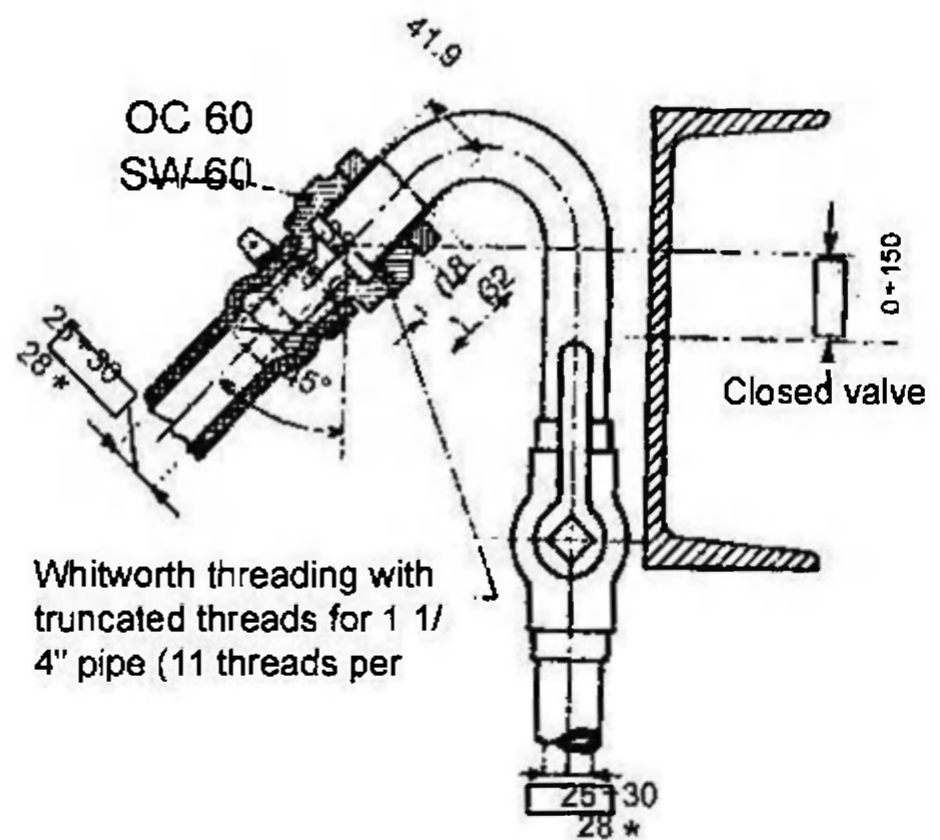


Fig. 27 - This arrangement is only permissible for coaches not fitted with a central safety coupler

□	Mandatory dimensions
)... (Minimum dimensions
(...)	Maximum dimensions
*	Recommended dimensions

NB : This drawing only gives the general shape of the head. For all dimensions which are not mandatory, variations are permitted. The heads must be designed in such a way as to offer the least possible resistance to air.

The coupler head may be manufactured with a ring (see *) or as a single component. If it is made as a single component, the laying surfaces of the packing ring must be in keeping with the dimensions specified here.

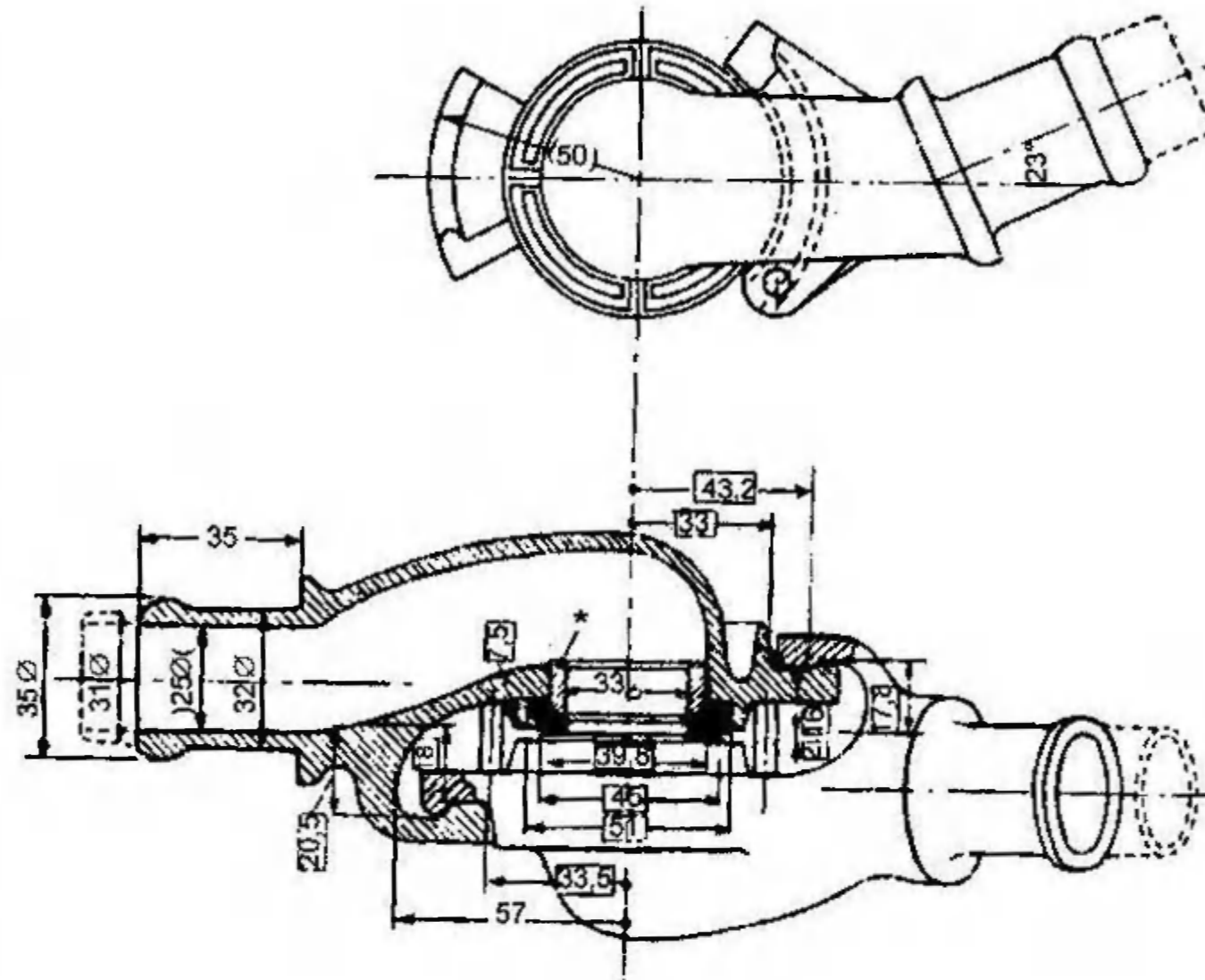


Fig. 28 - Coupling head for main brake pipe

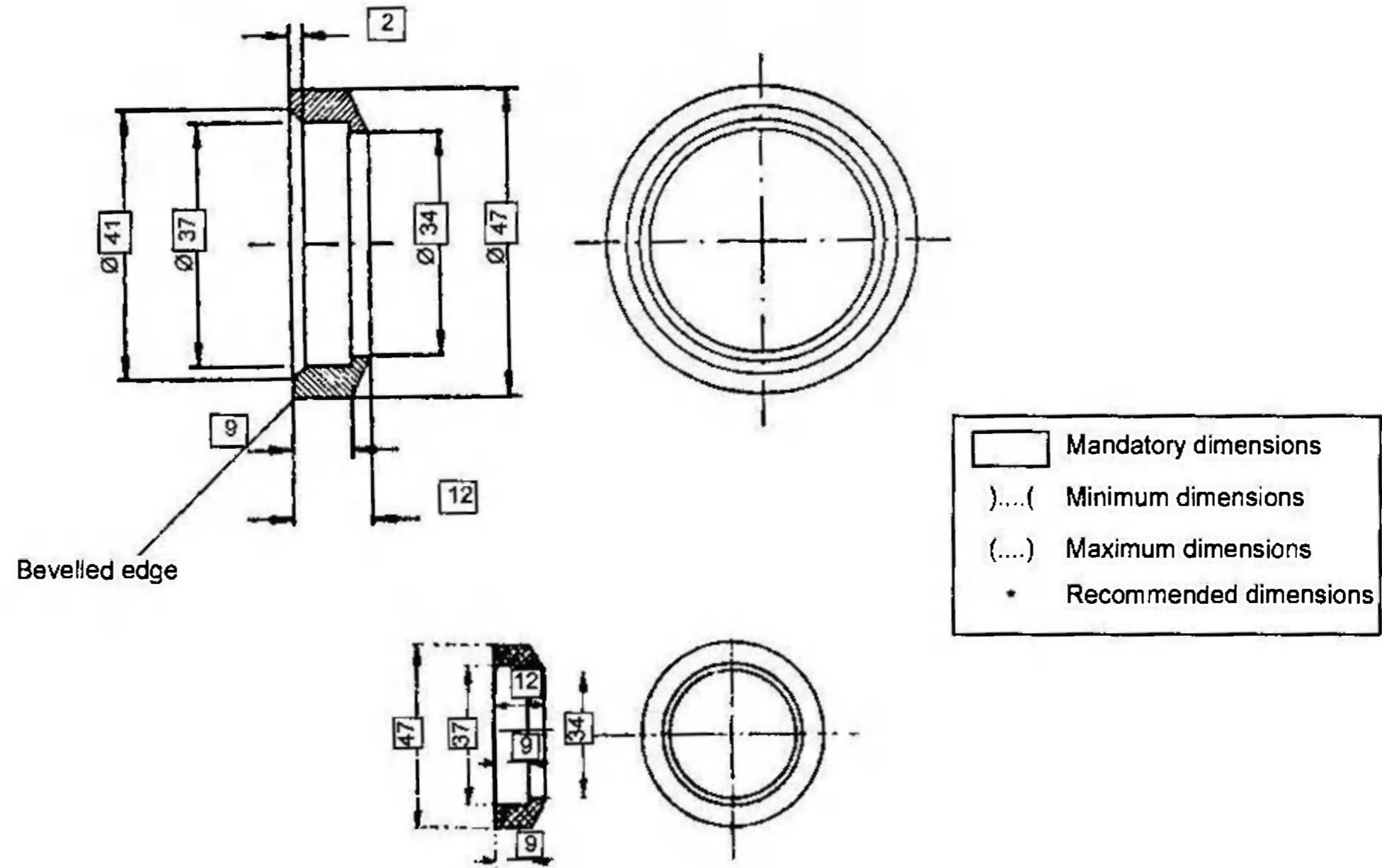


Fig. 29 - Washer